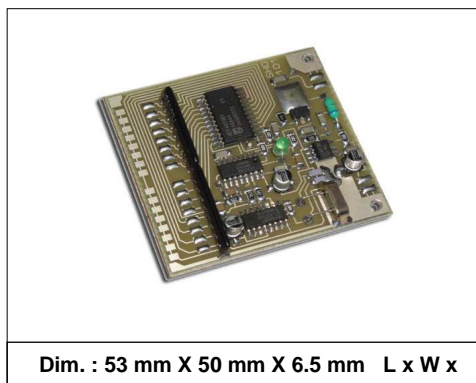


PLL Oscillator Board

Designed for generating audio to HF frequencies.

- **3 KHz – 10.0 MHz**
- **BCD parallel Controlled**
- **Pout : 100 mWatt (see text)**
- **Output : 50 Ohm**
- **12V**
- **Step Size 1.0 KHz**



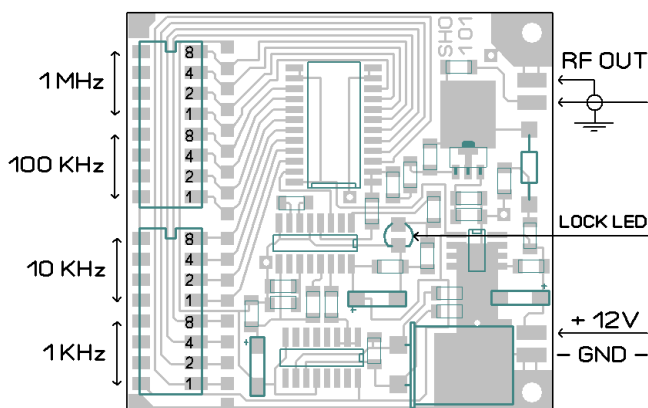
Dim. : 53 mm X 50 mm X 6.5 mm L x W x

ELECTRICAL SPECIFICATIONS

Characteristics	Min	Typ.	Max	Unit
Frequency	3.0		10,000.0	KHz
Output Power		100		mWatt PEP
Power Supply	10.0	12.0	13.8	Volt DC
Step Size	1.0			KHz
SSB Phase Noise	-42 @ 500 Hz	-63 @ 2 KHz	-105 @ 10 KHz	dbc

On board dip switches programs the pll frequency, these dip switches can be replaced by BCD rolling switches that will indicate the operating frequency.

Output level
 100mW @ 0.2-10.0 MHz
 50mW @ 100-200 KHz
 20mW @ 50-100 KHz
 10mW @ <50 KHz



IMPORTANT NOTICE

RF Source RESERVE THE RIGHT TO MAKE CHANGES TO THE PRODUCT(S) OR INFORMATION CONTAINED HEREIN WITHOUT NOTICE. RF Source ASSUMES NO RESPONSIBILITY FOR ANY ERRORS WHICH MAY APPEAR IN THIS DOCUMENT.

WARRANTY INFORMATION APPLICABLE TO THE PRODUCT IDENTIFIED HEREIN IS AVAILABLE UPON REQUEST. NOTHING CONTAINED HEREIN SHALL CONSTITUTE A WARRANTY, REPRESENTATION OR GUARANTEE OF ANY KIND. RF Source EXPRESSLY DISCLAIMS ALL OTHER WARRANTIES, EXPRESS AND/OR IMPLIED INCLUDING BUT NOT LIMITED TO WARRANTIES OF MERCHANTABILITY, AND OF FITNESS FOR A PARTICULAR PURPOSE, USE OR APPLICATION.

No part of this document may be copied or reproduced in any form or by any means without the prior written consent of RF Source.

WARNING

RF Source PRODUCTS ARE NOT INTENDED FOR USE IN LIFE SUPPORT APPLIANCES, DEVICES OR SYSTEMS. USE OF A RF Source PRODUCT IN ANY SUCH APPLICATION WITHOUT WRITTEN CONSENT IS PROHIBITED.