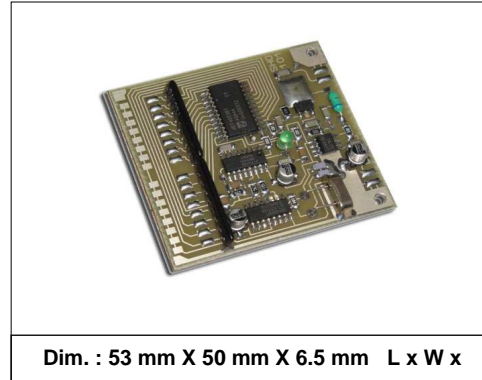


## PLL Oscillator Board

Designed for generating audio to HF frequencies.

- **3 KHz – 3.0 MHz**
- **BCD parallel Controlled**
- **Pout : 100 mWatt ( see text )**
- **Output : 50 Ohm**
- **12V**
- **Step Size 1.0 KHz**



Dim. : 53 mm X 50 mm X 6.5 mm L x W x

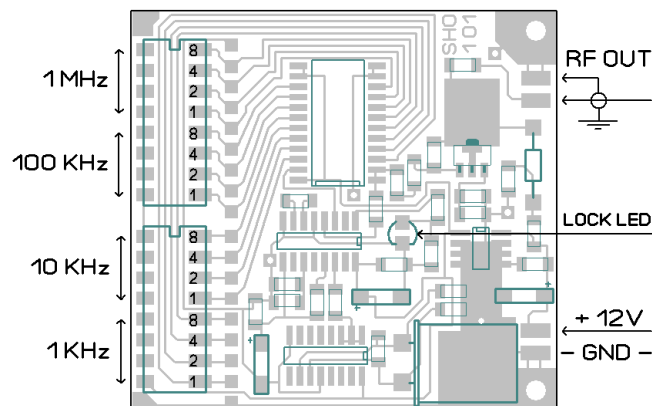
### ELECTRICAL SPECIFICATIONS

Characteristics	Min	Typ.	Max	Unit
Frequency	3.0		3000.0	KHz
Output Power		100		mWatt PEP
Power Supply	7.0	12.0	13.8	Volt DC
Step Size	1.0			KHz
SSB Phase Noise	-57 @ 500 Hz	-79 @ 2 KHz	-108 @ 10 KHz	dbc

On board dip switches programs the pll frequency, these dip switches can be replaced by BCD rolling switches that will indicate the operating frequency.

#### Output level

- 100mW @ 0.2-3.0 MHz
- 50mW @ 100-200 KHz
- 20mW @ 50-100 KHz
- 10mW @ <50 KHz



## **IMPORTANT NOTICE**

**RF Source RESERVE THE RIGHT TO MAKE CHANGES TO THE PRODUCT(S) OR INFORMATION CONTAINED HEREIN WITHOUT NOTICE. RF Source ASSUMES NO RESPONSIBILITY FOR ANY ERRORS WHICH MAY APPEAR IN THIS DOCUMENT.**

**WARRANTY INFORMATION APPLICABLE TO THE PRODUCT IDENTIFIED HEREIN IS AVAILABLE UPON REQUEST. NOTHING CONTAINED HEREIN SHALL CONSTITUTE A WARRANTY, REPRESENTATION OR GUARANTEE OF ANY KIND. RF Source EXPRESSLY DISCLAIMS ALL OTHER WARRANTIES, EXPRESS AND/OR IMPLIED INCLUDING BUT NOT LIMITED TO WARRANTIES OF MERCHANTABILITY, AND OF FITNESS FOR A PARTICULAR PURPOSE, USE OR APPLICATION.**

**No part of this document may be copied or reproduced in any form or by any means without the prior written consent of RF Source.**

## **WARNING**

**RF Source PRODUCTS ARE NOT INTENDED FOR USE IN LIFE SUPPORT APPLIANCES, DEVICES OR SYSTEMS. USE OF A RF Source PRODUCT IN ANY SUCH APPLICATION WITHOUT WRITTEN CONSENT IS PROHIBITED.**