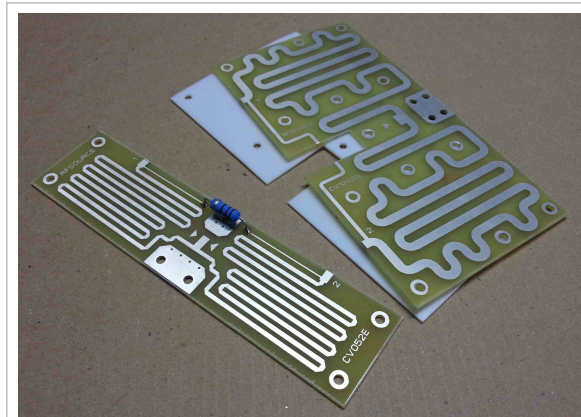


## 1.2KW VHF Combiner

2 way Power Splitter - Combiner  
 Designed for combining RF Power  
 Amplifiers in the VHF 136.0 - 156.0 MHz  
 Frequency range.

- o 136.0 - 156.0 MHz
- o 50 Ohm ports
- o Pout : 1.2KW
- o 2 x 600 W P.E.P in
- o isolation >30 db
- o insertion loss 0.2 db max

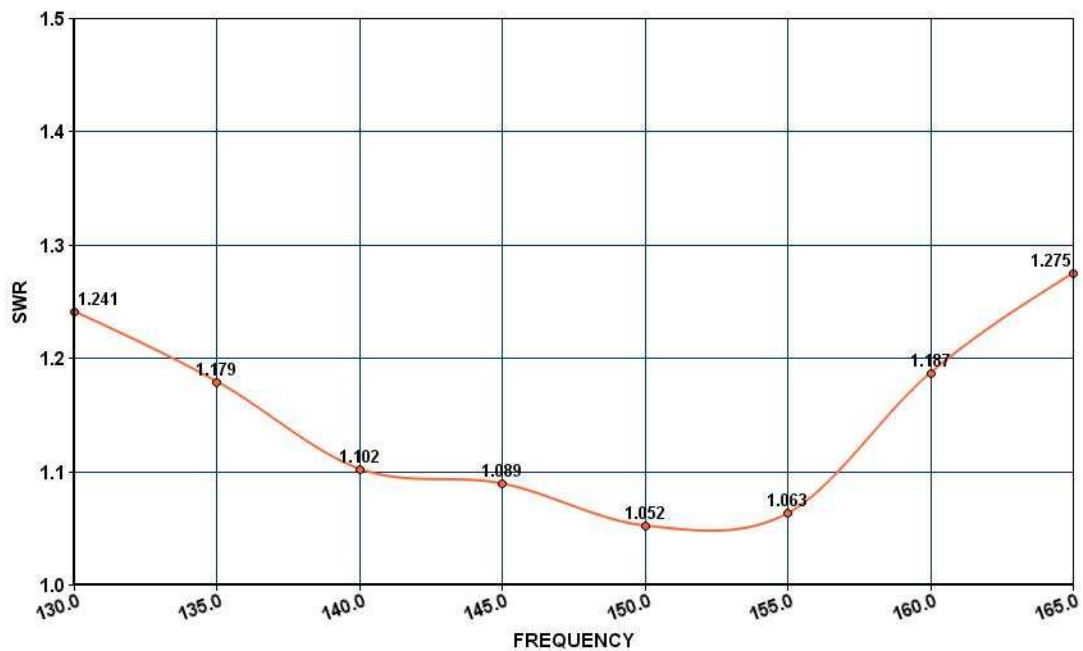


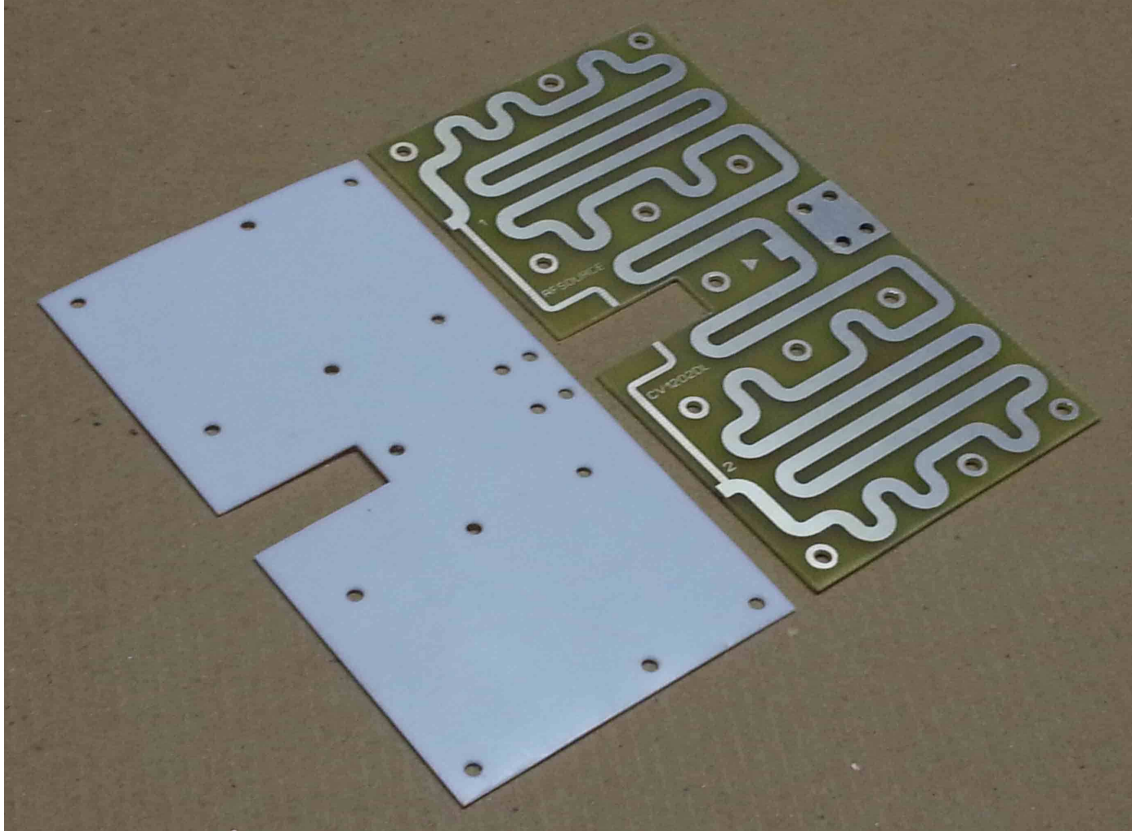
Combiner Dim. : 70mm X 135mm X 2,5mm L x W x H  
 Splitter Dim. : 33mm X 135mm X 1,5mm L x W x H

### ELECTRICAL SPECIFICATIONS

Characteristics	Min.	Typ.	Max.	Unit
Frequency	136.0		156.0	MHz
Output Power Combiner unit			1200	Watt
Input Power Splitter unit			50	Watt
Input Power Combiner unit			2 X 600	Watt
Input Power Splitter unit			2 X 25	Watt
SWR Combiner unit	1.17 : 1		1.08 : 1	
SWR Splitter unit	1.24 : 1		1.14 : 1	

CV1202DH SWR



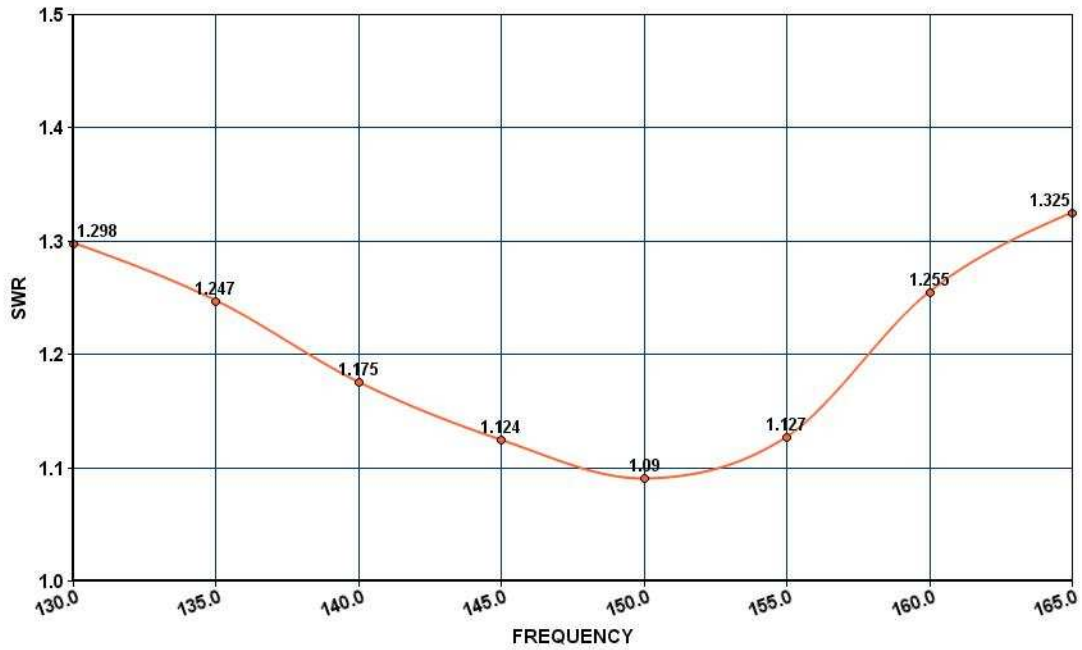


**NOTE 1:**  
Both Splitter CV052EH and Combiner CV1202DH boards must be mounting on flat heatsink surface.

**NOTE 2:**  
All available holes must be used for mounting using metal screws. All holes are GND point's

**NOTE 3:**  
The combiner unit CV1202DH consists of 2 layers one teflon and a single side FR4 PCB the teflon "foil" must be placed under the FR4 PCB to create a 3 layer "sandwich" together with the heatsink.

CV052EH SWR

**IMPORTANT NOTICE**

RF Source RESERVE THE RIGHT TO MAKE CHANGES TO THE PRODUCT(S) OR INFORMATION CONTAINED HEREIN WITHOUT NOTICE. WARRANTY INFORMATION APPLICABLE TO THE PRODUCT IDENTIFIED HEREIN IS AVAILABLE UPON REQUEST. RF Source EXPRESSLY DISCLAIMS ALL OTHER WARRANTIES, EXPRESS AND/OR IMPLIED INCLUDING BUT NOT LIMITED TO WARRANTIES OF MERCHANTABILITY, AND OF FITNESS FOR A PARTICULAR PURPOSE, USE OR APPLICATION. No part of this document may be copied or reproduced in any form or by any means without the prior written consent of RF Source.

**WARNING**

**RF Source PRODUCTS ARE NOT INTENDED FOR USE IN LIFE SUPPORT APPLIANCES, DEVICES OR SYSTEMS. USE OF AN RF Source PRODUCT IN ANY SUCH APPLICATION WITHOUT WRITTEN CONSENT IS PROHIBITED.**